

## 2022-mi januaarimiit maajimut aalisakkat avammut tunisaanerat

### Avammut tunisanut kisitsisit

*Siunertaq* Saqqummersitap siunertaraa piaarnerusumik aalisarnermiit avammut tunisartakkat tamanut paasissutissiissutiginnissaat.

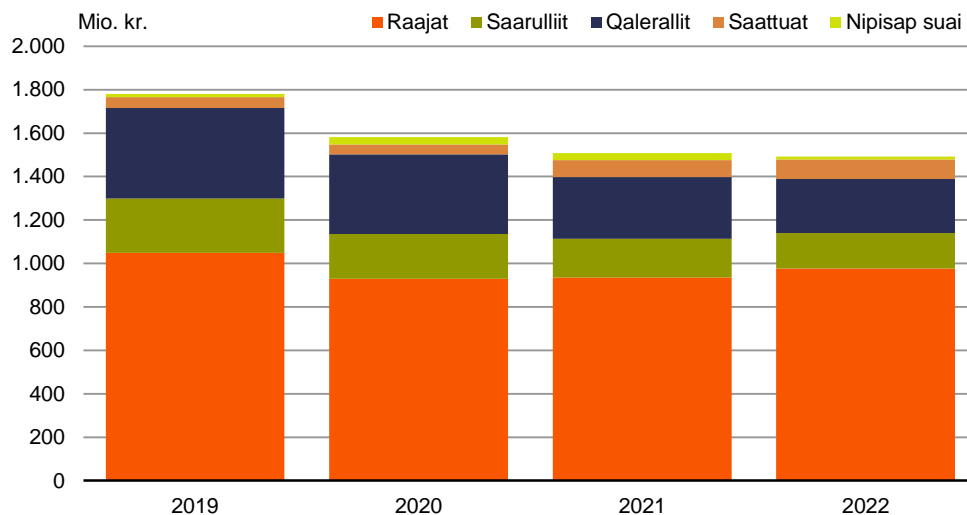
*Imarisaa* Saqqummersitami ilaatinneqarput Kalaallit Nunaata aalisarnermi avammut tunisartagarisai pingaarnert. Tassani pineqarput raajat, saarullit, qalerallit, saattuat, nipisap suaalu. Tunisassiat allat assersuutigalugu suluppaakkat, qeeqqat, aalisakkat immap ikeraneersut, uiluiit, puisininngaaneersut, savaninngaaneersut uumasunillu allaneersut saqqummersitami taamaalillutik ilaatinneqanngillat

*Avammut tunisat nalingi 1,1 pct.-mik annikilleriartut*

2022-mi januaarimiit maajimut avammut tunisat nalingi katillugit 1.492 mio. kr.-usimapput. Ukiup siulianut sanilliullugit 16 mio. kr.-inik annikinnerupput, annikilleriarnerlu katillugu 1,1 pct.-iuvoq. Eqqaamaneqassaarli kisitsisit utaq-qiisaagallaq naatsorsuinerummata taamaattumillu kingusinnerusukkut iluar-siiffigineqarsinnaallutik paasissutissat tamakkiinerusut pigineqalerpata.

*Titartagaq 1.*

### Avammut tunisat nalingat januar-maj, mio. kr.



*Raajat* Raajat januar-maj 2022-mi avammut tunisaanerisa nalingat 4,5 pct.-imik annertuseriarsimavoq, tamanna 42 mio. kr.-inik naleqarpoq. Avammut tunisat annertussusaat 0,6 pct.-imik qaffappoq akillu 3,9 pct.-imik qaffallutik.

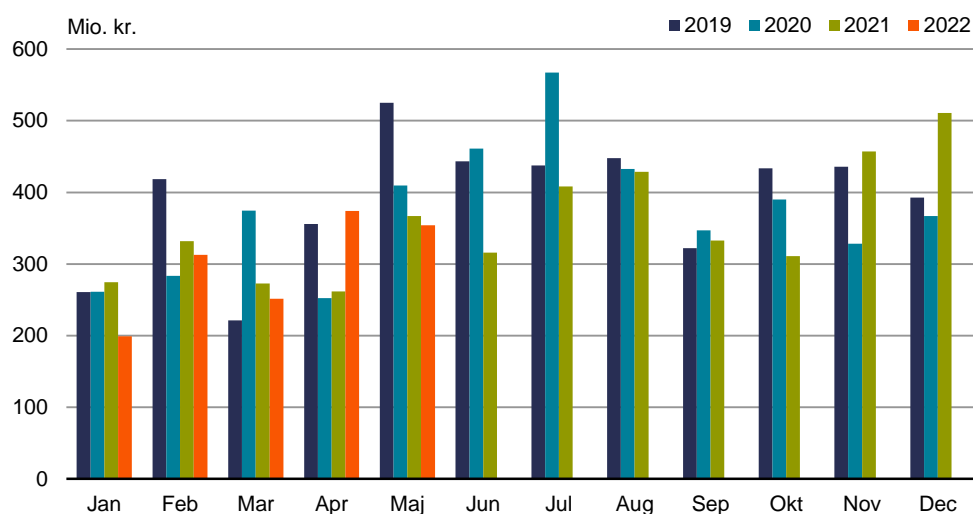
*Qalerallit* Qalerallit avammut tunineqartut nalingat 12,5 pct.-imik annikilleriarsimavoq, tunineqartut annertussusaat 27,7 pct.-imik annikilleriarsimasoq. Taamaalilluni kilomut akit 21,0 pct.-inik qaffassimapput.

*Saarullit* Saarullit avammut tunineqartut nalingat 8,7 pct.-imik appariarpoq, tunineqartut annertussusaat 30,1 pct.-imik appariarsimaneera pissutaalluni. Saarullit avammut tunineqartut kilomut akia 30,7 pct.-imik qaffappoq.

*Saattuat* Saattuat avammut tunineqartut nalingat 14,5 pct.-imik annertuseriarsimavoq, tunineqartut annertussusaat 23,7 pct.-imik annikilleriarsimasoq. Kilomut akia 50,0 pct.-imik qaffassimalluni.

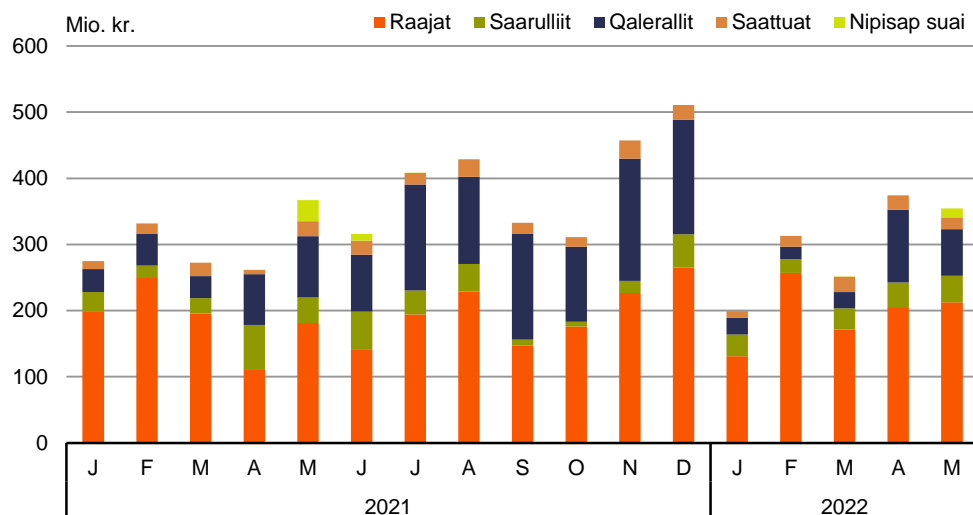
*Nipisap suai* Nipisap suai avammut tunineqartut nalingat 57,8 pct.-imik appariarpoq, tunineqartut annertussusaat 61,0 pct.-imik appariarsimaneera pissutaalluni. Taa-maalilluni kilomut akit 8,3 pct.-imik qaffassimapput.

*Titartagaq 2.* **Aalisakkat avammut tunisaanerit, mio. kr.**



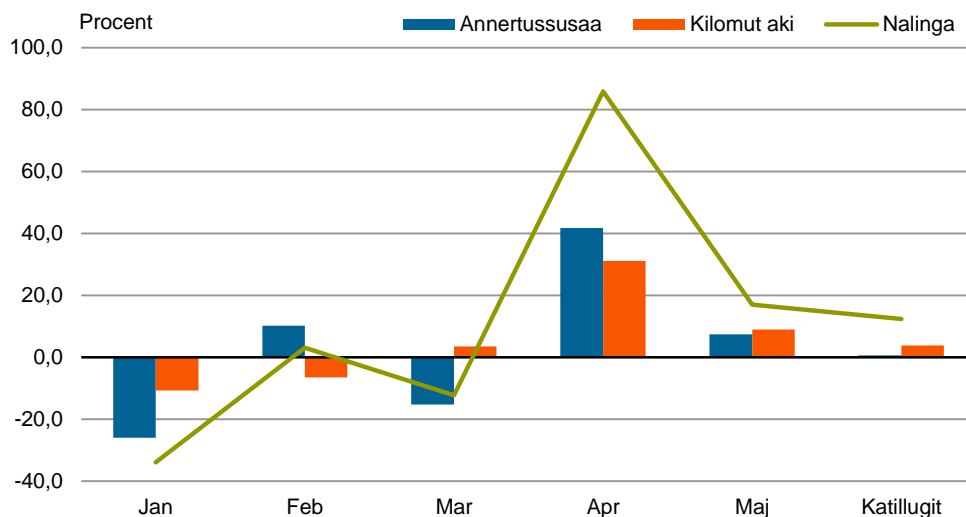
Najoqqutaq: <https://bank.stat.gl/IENEXPMND>

*Titartagaq 3.* **Aalisakkat pingaarnerit avammut tunisaanerit qaammatikkaarlugu**

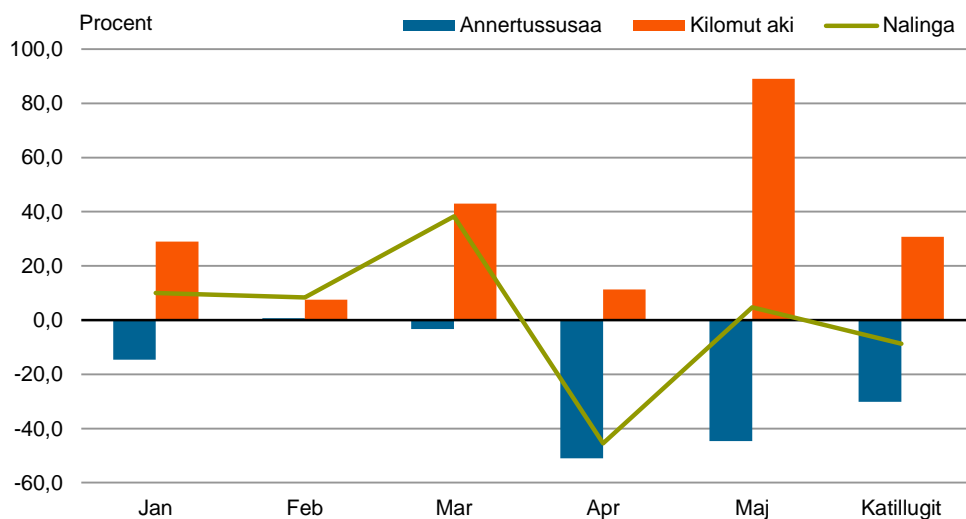


Najoqqutaq: <https://bank.stat.gl/IENEXPMND>

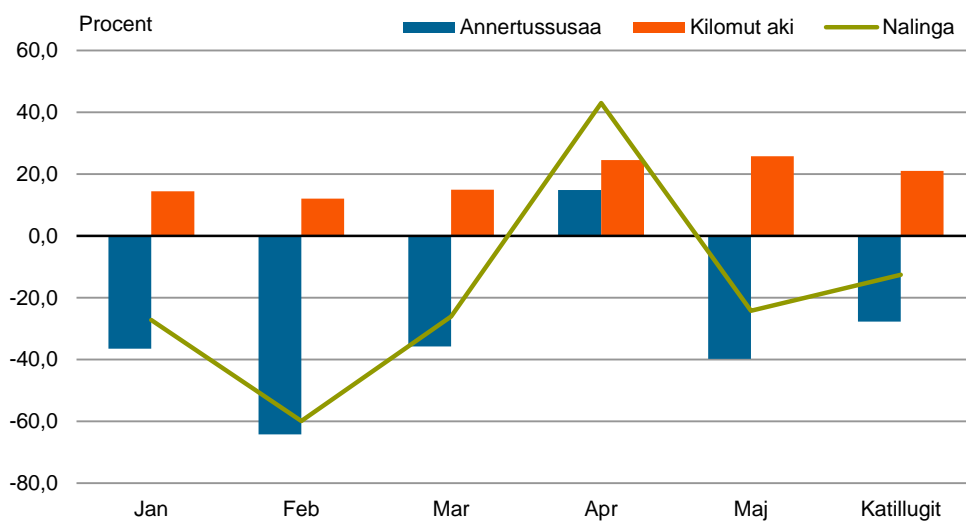
Titartagaq 4. Procentingorlugu allannguutit ukiup siulianut sanilliullugit, Raajat



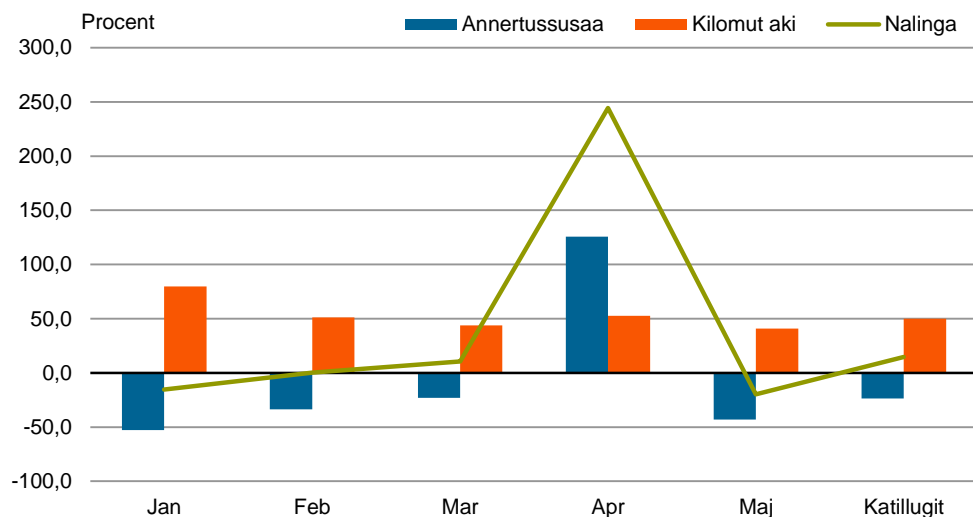
Titartagaq 5. Procentingorlugu allannguutit ukiup siulianut sanilliullugit, Saarullit



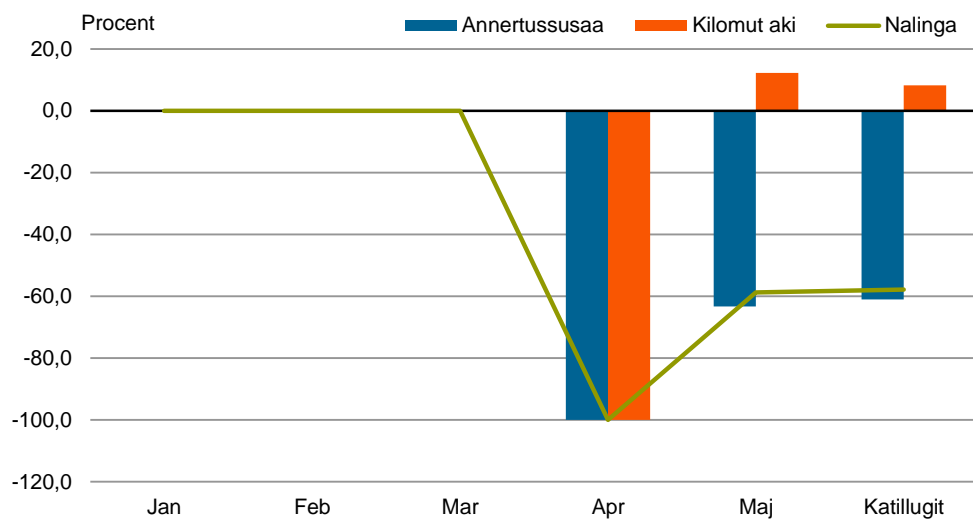
Titartagaq 6. Procentingorlugu allannguutit ukiup siulianut sanilliullugit, Qalerallit



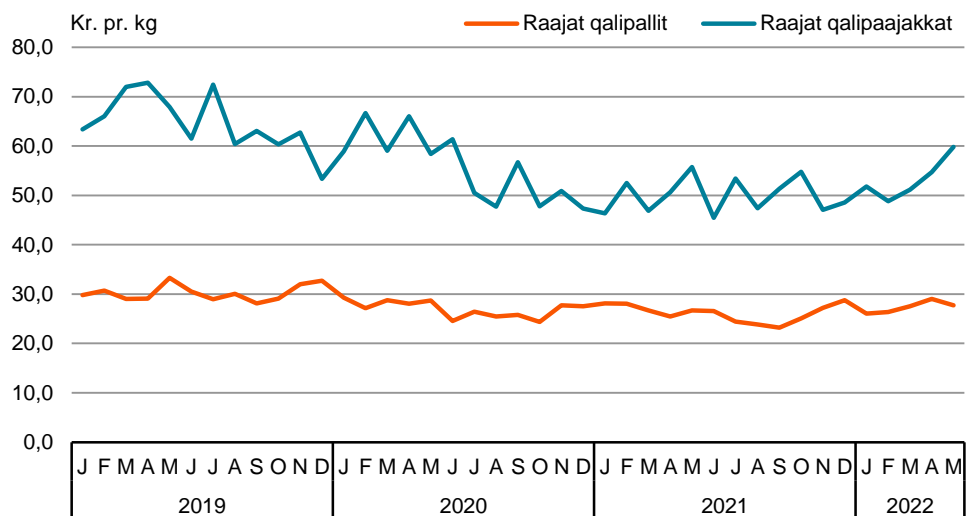
Titartagaq 7. Procentingorlugu allannguutit ukiup siulianut sanilliullugit, Saattuat



Titartagaq 8. Procentingorlugu allannguutit ukiup siulianut sanilliullugit, Nipisap suai



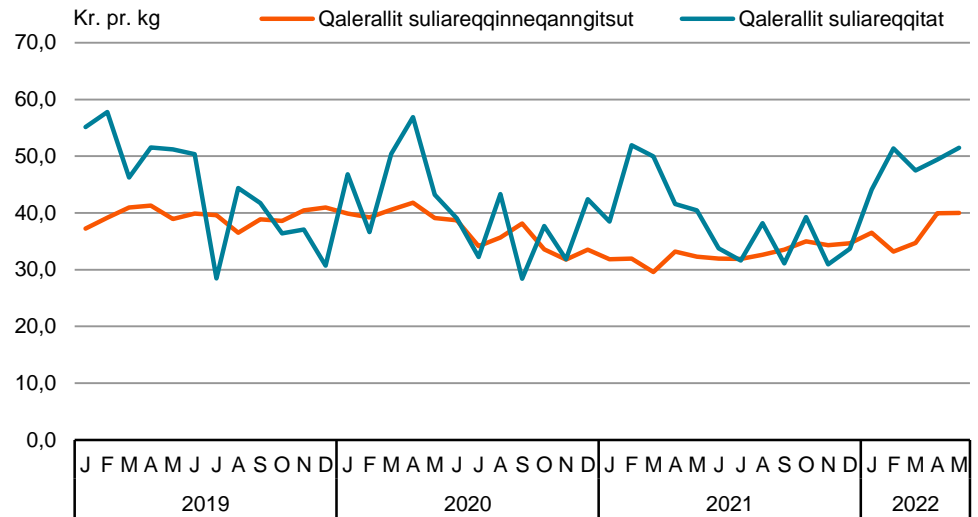
Titartagaq 9. Raajat qalipallit qalipaajakkallu kilumut akiisa ineriartornerat



Najoqqutaq: <https://bank.stat.gl/INEXPMND>

Titartagaq 10.

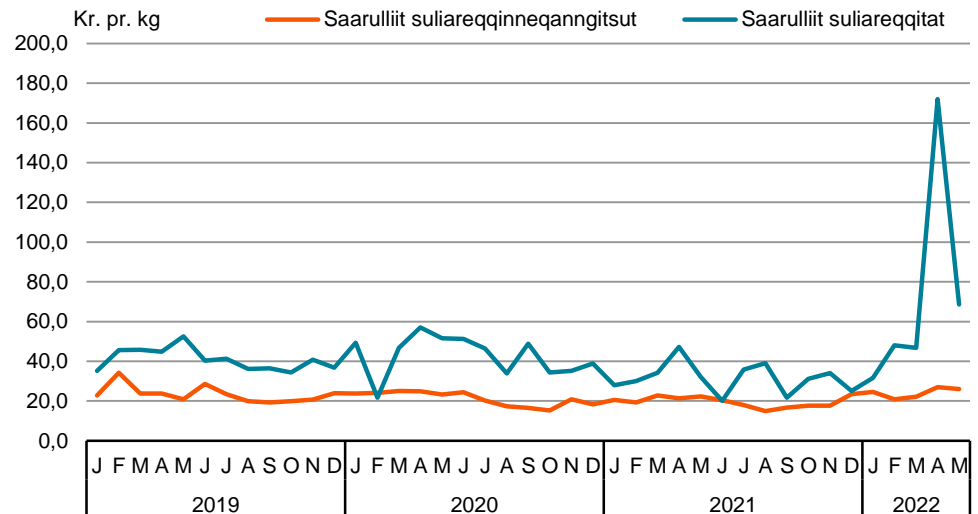
### Qalerallit suliareqqitat suliareqqitaanngitsullu kilumut akiisa ineriartornerat



Najoqqutaq: <https://bank.stat.gl/INEXPMND>

Titartagaq 11.

### Saarulliit suliareqqitat suliareqqitaanngitsullu kilumut akiisa ineriartornerat



Najoqqutaq: <https://bank.stat.gl/INEXPMND>

**Tabel 1. Aalisakkat avammut tunisaanerisa nalingat, 1.000 kr.**

	2021						2022					
	Jan	Feb	Mar	Apr	Maj	Katill.	Jan	Feb	Mar	Apr	Maj	Katill.
<b>Katillugit</b> .....	<b>274.635</b>	<b>331.894</b>	<b>272.629</b>	<b>261.552</b>	<b>367.015</b>	<b>1.507.724</b>	<b>199.077</b>	<b>312.943</b>	<b>251.302</b>	<b>374.225</b>	<b>354.227</b>	<b>1.491.774</b>
<b>Raajat</b> .....	<b>198.228</b>	<b>249.042</b>	<b>195.619</b>	<b>110.551</b>	<b>181.459</b>	<b>934.898</b>	<b>130.983</b>	<b>256.767</b>	<b>171.660</b>	<b>205.438</b>	<b>212.434</b>	<b>977.281</b>
Raajat qalipallit, qerisut .....	143.983	172.526	129.047	82.279	121.471	<b>649.306</b>	111.607	179.407	115.746	99.596	128.872	<b>635.227</b>
Raajat qalipaajakkat qerisullu .....	54.245	76.516	66.572	28.272	59.988	<b>285.592</b>	19.376	77.360	55.914	105.842	83.562	<b>342.054</b>
<b>Saarullik</b> .....	<b>29.691</b>	<b>19.261</b>	<b>23.085</b>	<b>67.625</b>	<b>38.559</b>	<b>178.220</b>	<b>32.678</b>	<b>20.867</b>	<b>31.914</b>	<b>36.861</b>	<b>40.367</b>	<b>162.686</b>
Saarullik ilivitsoq qerisoq .....	29.183	18.823	22.391	52.914	21.616	<b>144.928</b>	21.055	20.863	11.939	36.852	10.078	<b>100.787</b>
Saarullik panert. tarajort, ilivitsoq saaniagarluunniit .....	496	334	285	260	292	<b>1.667</b>	0	0	89	9	216	<b>314</b>
Saarullik saaniagaq qerisoq .....	0	104	409	14.450	16.640	<b>31.602</b>	11.623	2	19.886	0	30.000	<b>61.511</b>
Saarullik alla .....	12	0	0	0	11	<b>22</b>	0	1	0	0	73	<b>74</b>
<b>Qaleralik</b> .....	<b>34.772</b>	<b>47.329</b>	<b>33.241</b>	<b>77.061</b>	<b>92.412</b>	<b>284.815</b>	<b>25.304</b>	<b>18.992</b>	<b>24.569</b>	<b>110.209</b>	<b>70.026</b>	<b>249.101</b>
Qaleralik ilivitsoq qerisoq .....	24.342	24.285	19.722	53.305	66.518	<b>188.172</b>	17.844	5.744	10.982	56.216	47.834	<b>138.619</b>
Qaleralik saaniagaq .....	7.846	16.111	9.627	15.264	15.882	<b>64.729</b>	5.309	10.150	9.906	37.524	12.571	<b>75.460</b>
Qaleralik allami taaneqanngitsoq .....	2.584	6.933	3.893	8.491	10.012	<b>31.913</b>	2.151	3.098	3.681	16.470	9.621	<b>35.021</b>
<b>Saattuat</b> .....	<b>11.944</b>	<b>16.262</b>	<b>20.684</b>	<b>6.309</b>	<b>22.745</b>	<b>77.944</b>	<b>10.112</b>	<b>16.318</b>	<b>22.859</b>	<b>21.717</b>	<b>18.257</b>	<b>89.263</b>
<b>Nipisap suai</b> .....	<b>0</b>	<b>0</b>	<b>0</b>	<b>7</b>	<b>31.840</b>	<b>31.847</b>	<b>0</b>	<b>0</b>	<b>301</b>	<b>0</b>	<b>13.142</b>	<b>13.443</b>

Najoqqutaq: <https://bank.stat.gl/LENEXPMND>

**Tabel 2. Aalisakkt avammut tunisaanerisa annertussusaat, tons**

	2021						2022					
	Jan	Feb	Mar	Apr	Maj	Katill.	Jan	Feb	Mar	Apr	Maj	Katill.
<b>Katillugit</b> .....	<b>8.862</b>	<b>9.951</b>	<b>8.378</b>	<b>8.807</b>	<b>10.628</b>	<b>46.625</b>	<b>6.586</b>	<b>9.915</b>	<b>7.030</b>	<b>9.346</b>	<b>8.827</b>	<b>41.704</b>
<b>Raajat</b> .....	<b>6.290</b>	<b>7.611</b>	<b>6.250</b>	<b>3.787</b>	<b>5.624</b>	<b>29.563</b>	<b>4.655</b>	<b>8.388</b>	<b>5.300</b>	<b>5.368</b>	<b>6.043</b>	<b>29.754</b>
Raajat qalipallit, qerisut .....	5.121	6.154	4.830	3.229	4.548	<b>23.882</b>	4.281	6.803	4.208	3.432	4.647	<b>23.370</b>
Raajat qalipaajakkat qerisullu .....	1.170	1.457	1.420	558	1.076	<b>5.681</b>	374	1.585	1.092	1.935	1.397	<b>6.383</b>
<b>Saarullik</b> .....	<b>1.436</b>	<b>996</b>	<b>1.001</b>	<b>2.794</b>	<b>1.495</b>	<b>7.722</b>	<b>1.226</b>	<b>1.004</b>	<b>968</b>	<b>1.369</b>	<b>828</b>	<b>5.394</b>
Saarullik ilivitoq qerisoq .....	1.418	982	981	2.483	967	<b>6.830</b>	857	1.004	540	1.369	387	<b>4.157</b>
Saarullik panert. tarajort, ilivitoq saaniagarluunniit .....	17	12	9	8	12	<b>57</b>	0	0	2	0	6	<b>8</b>
Saarullik saaniagaq qerisoq .....	0	3	11	303	365	<b>682</b>	368	0	425	0	411	<b>1.205</b>
Saarullik alla .....	1	0	0	0	151	<b>152</b>	0	0	0	0	24	<b>24</b>
<b>Qaleralik</b> .....	<b>1.035</b>	<b>1.204</b>	<b>937</b>	<b>2.177</b>	<b>2.700</b>	<b>8.053</b>	<b>658</b>	<b>431</b>	<b>603</b>	<b>2.501</b>	<b>1.627</b>	<b>5.819</b>
Qaleralik ilivitoq qerisoq .....	764	761	667	1.605	2.060	<b>5.856</b>	489	173	317	1.408	1.196	<b>3.582</b>
Qaleralik saaniagaq .....	157	253	161	211	208	<b>989</b>	89	166	153	563	176	<b>1.146</b>
Qaleralik allami taaneqanngitsoq .....	114	191	110	361	432	<b>1.208</b>	80	92	133	530	256	<b>1.091</b>
<b>Saattuat</b> .....	<b>101</b>	<b>139</b>	<b>189</b>	<b>48</b>	<b>153</b>	<b>630</b>	<b>48</b>	<b>92</b>	<b>145</b>	<b>109</b>	<b>87</b>	<b>481</b>
<b>Nipisap suai</b> .....	<b>0</b>	<b>0</b>	<b>0</b>	<b>1</b>	<b>656</b>	<b>657</b>	<b>0</b>	<b>0</b>	<b>15</b>	<b>0</b>	<b>241</b>	<b>256</b>

Najoqqutaq: <https://bank.stat.gl/LENEXPMND>

**Tabel 3. Aalisakkat avammut tunisaanerisa kilomut akii**

	2021						2022					
	Jan	Feb	Mar	Apr	Maj	Katill.	Jan	Feb	Mar	Apr	Maj	Katill.
<b>Katillugit</b> .....	-	-	-	-	-	-	-	-	-	-	-	-
<b>Raajat</b> .....	<b>31,5</b>	<b>32,7</b>	<b>31,3</b>	<b>29,2</b>	<b>32,3</b>	<b>31,6</b>	<b>28,1</b>	<b>30,6</b>	<b>32,4</b>	<b>38,3</b>	<b>35,2</b>	<b>32,8</b>
Raajat qalipallit, qerisut .....	28,1	28,0	26,7	25,5	26,7	<b>27,2</b>	26,1	26,4	27,5	29,0	27,7	<b>27,2</b>
Raajat qalipaajakkat qerisullu .....	46,4	52,5	46,9	50,7	55,8	<b>50,3</b>	51,8	48,8	51,2	54,7	59,8	<b>53,6</b>
<b>Saarullik</b> .....	<b>20,7</b>	<b>19,3</b>	<b>23,1</b>	<b>24,2</b>	<b>25,8</b>	<b>23,1</b>	<b>26,7</b>	<b>20,8</b>	<b>33,0</b>	<b>26,9</b>	<b>48,8</b>	<b>30,2</b>
Saarullik ilivitsoq qerisq .....	20,6	19,2	22,8	21,3	22,4	<b>21,2</b>	24,6	20,8	22,1	26,9	26,1	<b>24,2</b>
Saarullik panert. tarajort, ilivitsoq saaniagarluunniit .....	28,8	28,8	32,0	32,0	25,2	<b>29,0</b>	0,0	0,0	41,4	172,0	37,7	<b>39,6</b>
Saarullik saaniagaq qerisq .....	0,0	35,1	35,8	47,7	45,6	<b>46,3</b>	31,6	59,0	46,8	0,0	73,0	<b>51,1</b>
Saarullik alla .....	12,5	0,0	0,0	0,0	0,1	<b>0,1</b>	0,0	36,0	0,0	0,0	3,0	<b>3,1</b>
<b>Qaleralik</b> .....	<b>33,6</b>	<b>39,3</b>	<b>35,5</b>	<b>35,4</b>	<b>34,2</b>	<b>35,4</b>	<b>38,5</b>	<b>44,1</b>	<b>40,8</b>	<b>44,1</b>	<b>43,0</b>	<b>42,8</b>
Qaleralik ilivitsoq qerisq .....	31,9	31,9	29,6	33,2	32,3	<b>32,1</b>	36,5	33,2	34,7	39,9	40,0	<b>38,7</b>
Qaleralik saaniagaq .....	50,0	63,7	59,8	72,4	76,5	<b>65,5</b>	59,9	61,0	64,7	66,7	71,6	<b>65,8</b>
Qaleralik allami taaneqanngitsoq .....	22,6	36,3	35,6	23,5	23,2	<b>26,4</b>	26,7	33,8	27,7	31,1	37,6	<b>32,1</b>
<b>Saattuat</b> .....	<b>117,9</b>	<b>117,2</b>	<b>109,4</b>	<b>130,7</b>	<b>148,6</b>	<b>123,6</b>	<b>212,0</b>	<b>177,2</b>	<b>157,2</b>	<b>199,5</b>	<b>209,3</b>	<b>185,5</b>
<b>Nipisap suai</b> .....	<b>0,0</b>	<b>0,0</b>	<b>0,0</b>	<b>9,4</b>	<b>48,6</b>	<b>48,5</b>	<b>0,0</b>	<b>0,0</b>	<b>20,3</b>	<b>0,0</b>	<b>54,5</b>	<b>52,5</b>

Najoqqutaq: <https://bank.stat.gl/LENEXPMND>



## **Periaaseq najoqqutallu**

Avammut tunisat nalingat saqqummersinneqartoq tassaavoq kisitsisitigut paasissutissani avammut tunisat nalingat. Tunisassiat nalunaarsorneqartarput Kalaallit Nunaannit anninneqarfiat sumiinnersoq apeqqutaatillugu, tassunga ilanngunneqartarput tunisassiat avammut tunineqarnissaanut assartorneqarnerinut, Kalaallit Nunaata iluani assartuinerit (Kalaallit Nunaata killeqarfianut imaluunniit sissiukkanut) aningaasartuutit. Nali taanna fob-imik (free on board) taaneqartarpoq.

Paasissutissat 2020-2022-meersut Akileraartarnermut Aqutsisoqarfimmit akitsuutininik suliaqartartunit pissarsiarineqarput. Kisitsisit pitsaassusaanut apeqqutaapput avammut tunisartut piffissaq eqqorlugu Akileraartarnermut Aqutsisoqarfimmut akitsuutininik suliaqartartunut nalunaarutiginnissimanersut, taamaattumik kisitsisit mianersuullugit nalilersorneqassapput.

Aalisakkat avammut tunisaanerat qaammatikkaarlugit saqqummersinneqartarput.

---

S Ilisarnaatinut nassuiaatit:  
...Paasissutissat pigineqanngillat  
.. Paasissutissat tatiginanngitsut ilisarinnilersitsinnaasulluunniit  
. Kisitsisitaqarsinnaanngitsut  
0 Affaanit mikinerusut  
- Nul  
\* Kisitsisaagallartut imaluunniit missingersuut

Eventuel henvendelse  
Aqqaluaq Lund  
E-mail: [AQLU@stat.gl](mailto:AQLU@stat.gl)

Nunanut allanut niuernerq

Naatsorsueqqissaartarfik  
Postboks 1025 · 3900 Nuuk  
Oqar.: +299 34 57 70  
[www.stat.gl](http://www.stat.gl) · e-mail: [stat@stat.gl](mailto:stat@stat.gl)

